

# Your New TRAC Library Card



When replacing your TRAC library card, please note the following information in regards to your existing eResource services.

## Before Receiving Your New Card

### FREEGAL (app users only)

If you use the FREEGAL app on your mobile device, please ensure you back up all downloaded songs onto your computer **before** switching to a new library card. If you do not back up your songs to your computer, they will be lost.

For instructions on how to back up FREEGAL app downloads to your computer, visit <http://marigold.freegalmusic.com/questions>

# Your New TRAC Library Card



When replacing your TRAC library card, please note the following information in regards to your existing eResource services.

## Before Receiving Your New Card

### FREEGAL (app users only)

If you use the FREEGAL app on your mobile device, please ensure you back up all downloaded songs onto your computer **before** switching to a new library card. If you do not back up your songs to your computer, they will be lost.

For instructions on how to back up FREEGAL app downloads to your computer, visit <http://marigold.freegalmusic.com/questions>

# Your New TRAC Library Card



When replacing your TRAC library card, please note the following information in regards to your existing eResource services.

## Before Receiving Your New Card

### FREEGAL (app users only)

If you use the FREEGAL app on your mobile device, please ensure you back up all downloaded songs onto your computer **before** switching to a new library card. If you do not back up your songs to your computer, they will be lost.

For instructions on how to back up FREEGAL app downloads to your computer, visit <http://marigold.freegalmusic.com/questions>

# Your New TRAC Library Card



When replacing your TRAC library card, please note the following information in regards to your existing eResource services.

## Before Receiving Your New Card

### FREEGAL (app users only)

If you use the FREEGAL app on your mobile device, please ensure you back up all downloaded songs onto your computer **before** switching to a new library card. If you do not back up your songs to your computer, they will be lost.

For instructions on how to back up FREEGAL app downloads to your computer, visit <http://marigold.freegalmusic.com/questions>

## After Receiving Your New Card

### CLOUD LIBRARY & OVERDRIVE

To transfer any existing holds, items out, or lists from your current barcode to your new barcode, please request library staff contact Marigold Library System.

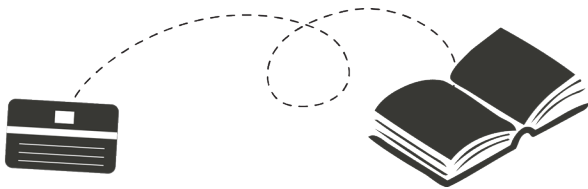
*The merging process may take up to two weeks.*

### HOOPLA

Update your Hoopla account with your new library card barcode by logging in to your Hoopla account (online or via mobile app). Access **SETTINGS** and choose **LIBRARY SETTINGS**. Enter your new barcode number and click **SAVE**.

### ME LIBRARIES

If you have previously registered with ME Libraries at [www.melibraries.ca](http://www.melibraries.ca), you will need to re-register once you have a new library card.



**Marigold Library System**  
710 - 2nd Street  
Strathmore, Alberta T1P 1K4  
403-934-5334  
[www.marigold.ab.ca/eresources](http://www.marigold.ab.ca/eresources)

## After Receiving Your New Card

### CLOUD LIBRARY & OVERDRIVE

To transfer any existing holds, items out, or lists from your current barcode to your new barcode, please request library staff contact Marigold Library System.

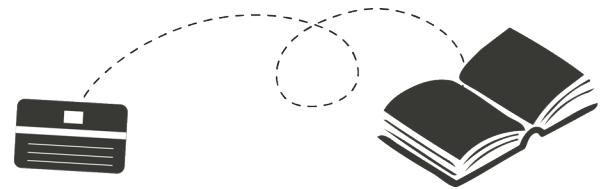
*The merging process may take up to two weeks.*

### HOOPLA

Update your Hoopla account with your new library card barcode by logging in to your Hoopla account (online or via mobile app). Access **SETTINGS** and choose **LIBRARY SETTINGS**. Enter your new barcode number and click **SAVE**.

### ME LIBRARIES

If you have previously registered with ME Libraries at [www.melibraries.ca](http://www.melibraries.ca), you will need to re-register once you have a new library card.



**Marigold Library System**  
710 - 2nd Street  
Strathmore, Alberta T1P 1K4  
403-934-5334  
[www.marigold.ab.ca/eresources](http://www.marigold.ab.ca/eresources)

## After Receiving Your New Card

### CLOUD LIBRARY & OVERDRIVE

To transfer any existing holds, items out, or lists from your current barcode to your new barcode, please request library staff contact Marigold Library System.

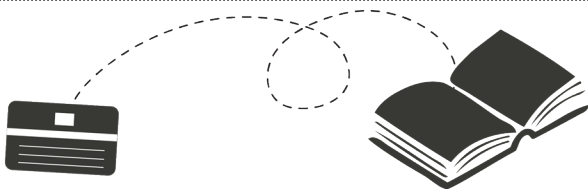
*The merging process may take up to two weeks.*

### HOOPLA

Update your Hoopla account with your new library card barcode by logging in to your Hoopla account (online or via mobile app). Access **SETTINGS** and choose **LIBRARY SETTINGS**. Enter your new barcode number and click **SAVE**.

### ME LIBRARIES

If you have previously registered with ME Libraries at [www.melibraries.ca](http://www.melibraries.ca), you will need to re-register once you have a new library card.



**Marigold Library System**  
710 - 2nd Street  
Strathmore, Alberta T1P 1K4  
403-934-5334  
[www.marigold.ab.ca/eresources](http://www.marigold.ab.ca/eresources)

## After Receiving Your New Card

### CLOUD LIBRARY & OVERDRIVE

To transfer any existing holds, items out, or lists from your current barcode to your new barcode, please request library staff contact Marigold Library System.

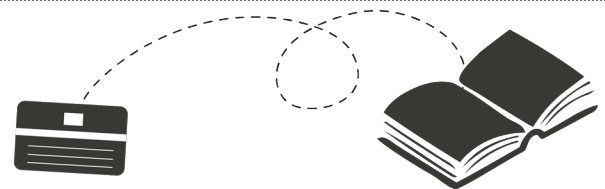
*The merging process may take up to two weeks.*

### HOOPLA

Update your Hoopla account with your new library card barcode by logging in to your Hoopla account (online or via mobile app). Access **SETTINGS** and choose **LIBRARY SETTINGS**. Enter your new barcode number and click **SAVE**.

### ME LIBRARIES

If you have previously registered with ME Libraries at [www.melibraries.ca](http://www.melibraries.ca), you will need to re-register once you have a new library card.



**Marigold Library System**  
710 - 2nd Street  
Strathmore, Alberta T1P 1K4  
403-934-5334  
[www.marigold.ab.ca/eresources](http://www.marigold.ab.ca/eresources)